



CATALOGUE

CHAMLOCK FITTINGS

☎ 000-1234-5678-00

✉ Info@ciaco.in

🌐 www.ciaco.in

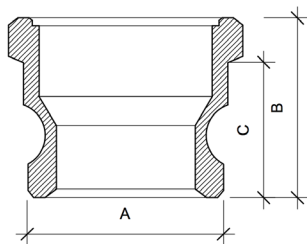
ciaccoTM

— Fit and Forget —

Type A – Stainless Steel Camlock Coupling



The Type A is a Male Adapter x Female NPT Thread.



Size(mm)	1-1/4'	1-1/2'	2'	2-1/2'	3'
A	45.5	53.4	63	75.8	91.5
B	56	57	64	74	75
C	40.5	42.5	48.5	50.5	51.5

Size	: 1-1/4" to 3"
Part Number	: Type A
Material	: Stainless Steel 304
Thread	: Female NPT

Will connect with:

- The adapter portion will couple with a Female Coupler.
- The thread will connect to a Male NPT Thread. (National Pipe Thread)

How To Use:

- To connect, slide the Type A Adapter into a Female Coupler and then simultaneously close the two cam handles.
- To disconnect, lift up the cam handles and uncouple the two fittings.
- Thread the Female NT portion onto a Male NPT Thread.

Material of Construction:

- Constructed out of Stainless Steel.
- For other materials scroll Down to "Related Products".

Used For:

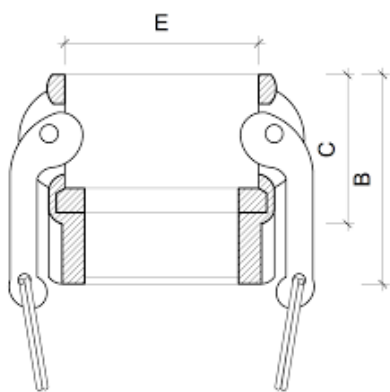
- Installing a Male Cam & Groove onto a Male NPT Thread.
- Connecting with a Female Coupler of identical size.

Applications	Food Industry	Pharmaceutical Industry
	Chemical Industry	Construction Agriculture

Type D – Stainless Steel Camlock Locks



Stainless Steel Female Cam and Groove Coupler x Female NPT Thread.



Size(mm)	1-1/4'	1-1/2'	2'	2-1/2'	3'
A	45.5	53.4	63	75.8	91.5
B	56	57	64	74	75
C	40.5	42.5	48.5	50.5	51.5

Size	: 1-1/4" to 3"
Part Number	: Type D
Material	: Stainless Steel 304
Thread	: Female NPT

Sizes:

- This Stainless Coupler is offered in sizes starting from 1-1/4" all the way up to 3".

Will connect with:

- The coupler portion will couple with a Male Adapter.
- The thread will connect to a Male NPT Thread. (National Pipe Thread)

How To Use:

- To quickly connect, slide the Type D Coupler onto a Male Adapter and then close the two cam lever arms simultaneously.
- To quickly disconnect, lift up the cam handles and uncouple the two fittings.

Material of Construction:

- Constructed out of Stainless Steel.
- For other materials scroll Down to "Related Products".

Used For:

- Installing a Female Cam & Groove onto a Male NPT Thread.
- Connecting with a Male Adapter of the same size.

- To Install:** • Thread the Female NPT portion into a Male NPT Thread.

Pendent type Sprinkler

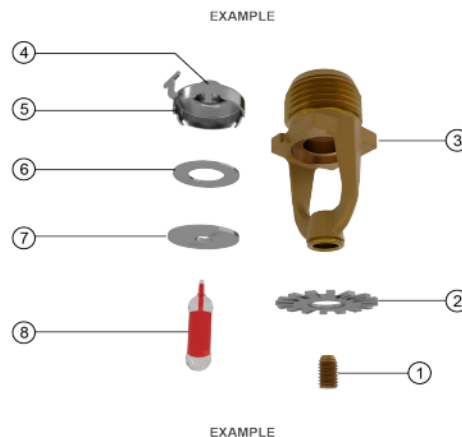


Figure – 3 Sprinkler Components

Mounting	Upright
Response	Standard and Quick Response (Standard Coverage)
Temperature Rating	57°C, 68°C, 79°C & 93°C
K-Factor	5.6 (80)
Element	Glass Bulb
Occupancy Type	Light Hazard, Ordinary Hazard, Extra Hazard
Thread Size	1/2" BSPT and 1/2" NPT
Max. Pressure	175 psi (12 bar)
Finishes	Brass, Chrome, White (RAL 9010), Custom Colours on Request
Sprinkler Wrench	Model SP-M
Approvals	UL Listed & FM Approved (Refer to catalogue for details)

Ref Description Material:

1. Compression screw Brass CW612N, CW508L, UNS-C36000 or UNS-C26000
2. Deflector Stainless steel UNS S30400
3. Sprinkler body CW602N, UNS-C84400 or QM brass
4. Pip cap seal Polytetrafluoroethylene (PTFE)
5. Pip cap shell Stainless steel UNS-S44400
6. Belleville spring Nickel alloy
7. Pip cap disc Stainless steel UNS-S30100
8. Bulb Glass, nominal 0.10" (3 mm) diameter

1/2" standard response pendent fire sprinkler

- Connecting thread: 1/2"(15mm)
- Material: brass, zinc
- K-factor: 5.6
- Norminal diameter (mm): DN15
- Response: Standard response(5mm glass bulb)
- Temperature rate:68 degree
- Working pressure 1.2MPa (12 Bar)

sidewall type Sprinkler

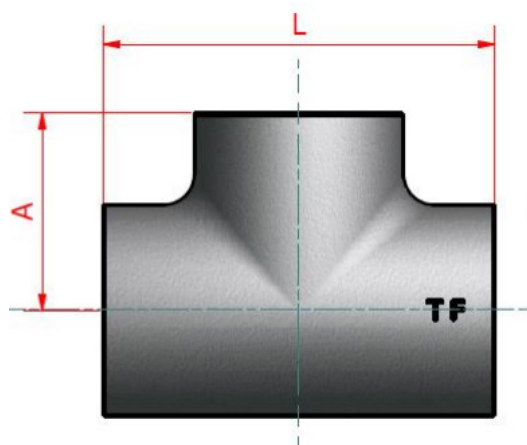


Sidewall Sprinkler are specially designed for installation along walls where conventional pendent or upright sprinklers cannot be used. These sprinklers discharge water in a lateral pattern, providing effective coverage in rooms, corridors, hotels, offices, residential spaces, and areas with narrow layouts.

Their half-deflector design projects water outward in a fan-shaped pattern to ensure uniform distribution across the protected area.

Available in both standard and quick-response models, with multiple K-factors, temperature ratings, and finishes.

Tee



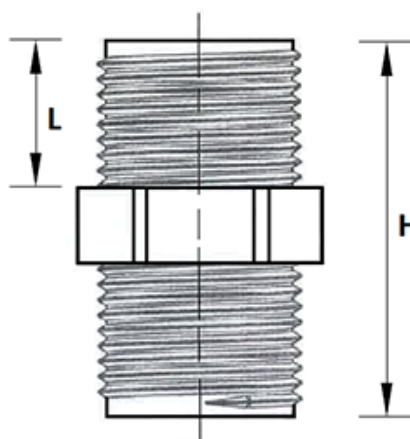
Pipe Tee dimensions are covered table given below for the size 1/4" to 2". In piping, two types of tees are used, straight or equal and reducing tee. The following shall be checked during the inspection of Pipe Tee Dimensions.

Size :	1/4"NB TO 2"NB IN
Type :	Socket Weld (S/W) & SCREWED (SCRD) – NPT, BSP, BSPT
Form :	45 Deg Elbow, 90 Deg Elbow, Forged Elbow, Threaded Elbow, Socket Weld Elbow.

The diameter of the branch and run pipe The thickness of the tee Center to center dimension for branch Length of the tee.

Size (Inch) (mm)	Centre to Face dim. A (mm)	Length dim L (mm)	Weight Each (kgs)
1/4" (6mm)	16	32	0.11
3/8" (10mm)	24	48	0.1
1/2" (15mm)	32	64	0.2
3/4" (20mm)	35	70	0.23
1" (25mm)	43	86	0.46
1.1/4" (32mm)	51	102	0.71
1.1/2" (40mm)	52	104	0.87
2" (50mm)	64	128	1.45

Hex Nipple



Dimensions

Size (Inch) (mm)	H (mm)	H (Inch)	L (mm)	L (Inch)
1/4" (6mm)	34.00	1.34	16.80	0.66
3/8" (10mm)	36.00	1.42	19.50	0.77
1/2" (15mm)	44.30	1.44	23.70	0.93
3/4" (20mm)	48.50	1.91	28.70	1.13
1" (25mm)	52.50	2.07	35.50	0.40
1.1/4" (32mm)	58.00	2.28	46.00	1.81
1.1/2" (40mm)	68.80	2.47	51.00	2.00
2" (50mm)	66.50	2.62	62.70	2.47

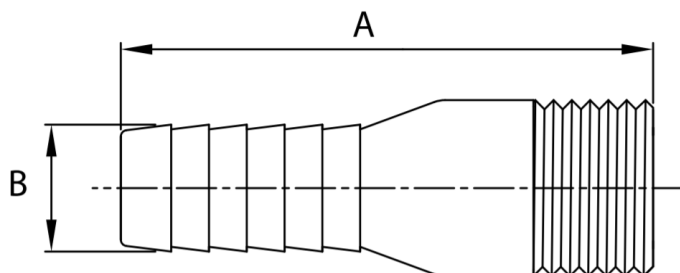
Features

- Superior Quality Investment-casted Stainless Steel.
- Available in S.S 304(CF8) & S.S 316(CF8M) Grades.
- Precise machining
- Available in BSP / BSPT / NPT Threading as per requirement.
- Pressure Rating PN25, Test Pressure (Hyd.): -30Kg./cm² (427 psig)
- Working Pressure 25 Kg./cm² (356 psig)

Suitability

- Water, Air, Gas, Oil, Steam

Hose Nipple



Dimensions

Size (Inch) (mm)	A (Inch)	A (mm)	B (Inch)	B (mm)
1/4" (6mm)	1.69	43	0.62	16
3/8" (10mm)	1.88	48	0.74	19
1/2" (15mm)	2.28	58	0.86	22
3/4" (20mm)	2.55	65	1.06	27
1" (25mm)	3.11	79	1.18	30
1.1/4" (32mm)	3.22	82	1.85	47
1.1/2" (40mm)	3.46	88	2.04	52
2" (50mm)	3.91	97	2.40	61

Features

- Superior Quality Investment-casted Stainless Steel.
- Available in S.S 304(CF8) & S.S 316(CF8M) Grades.
- Precise machining
- Available in BSP / BSPT / NPT Threading as per requirement.
- Pressure Rating PN25, Test Pressure (Hyd.): -30Kg./cm² (427 psig)
- Working Pressure 25 Kg./cm² (356 psig)

Suitability

- Water, Air, Gas, Oil, Steam